

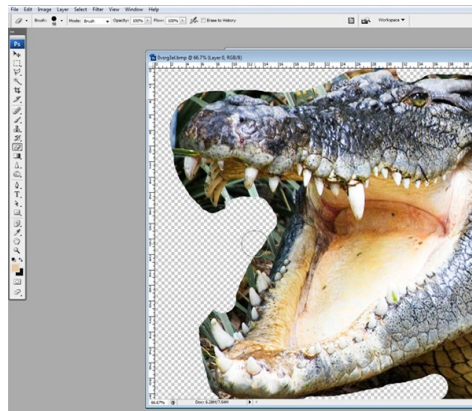
How to Combine a Crocodile and a Frog in Photoshop



How to Set the Scene

Step 1 – Open both of the images in Photoshop.

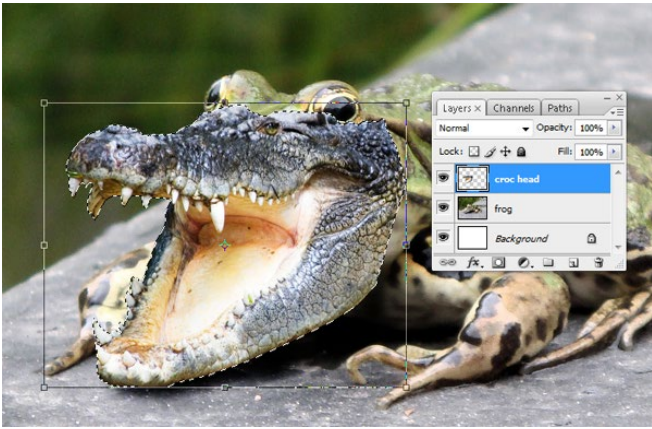
Step 2 - Crocodile's head. Delete the background so that you will end up with a transparent background.



Step 3

Once you have got the croc's head cut out, copy the croc layer and paste it above the frog layer, and label this layer **Croc Head**. You will need to try to resize it using the **Transform** tool (**T**) to where you think it fits best.

You'll notice that there's still some work to do as the croc's eye is visible and the color doesn't match with the frog.

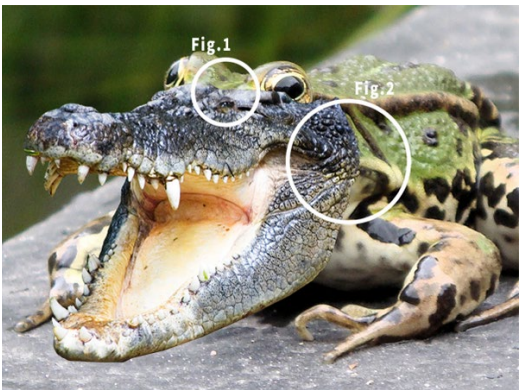


2. How to Match the Frog and Crocodile

Step 1

Using the **Clone Stamp Tool (S)**, we will attempt to remove the croc's eye. When cloning, using a soft brush helps blend the cloned area more effectively. While holding the **Alt** key, select a similar area of skin near the eye that can be used to cover over the eye. Now we need to join the back of the croc's jaw-line to the frog's neck. Again, select an area that matches the croc's jaw pattern and use the Clone Tool to fill in a suitable connection.

Mr. Colby's Graphics

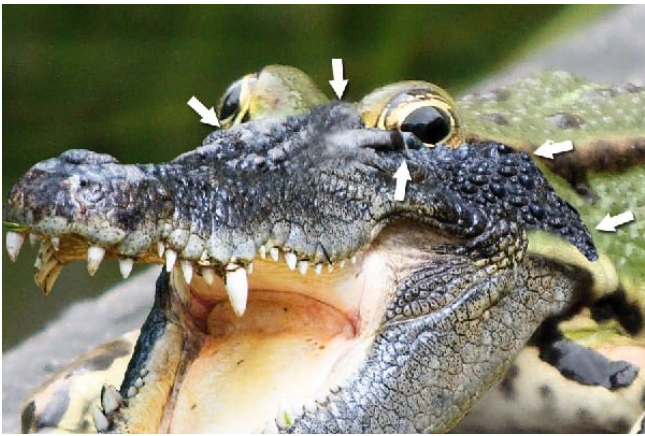


Always look for elements that can be cloned together and sections that look as if they might fit. You should now have something that looks similar to the image below.



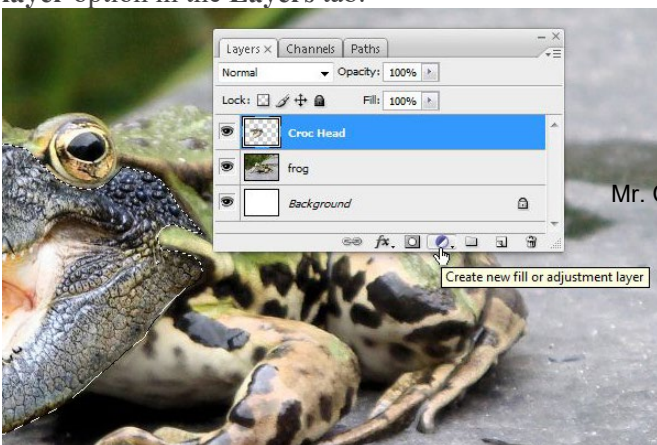
Step 2 -We are starting to get a better shape, but there are still elements that do not quite match up. Part of the croc's head is still covering the frog's eyes, and they need to be removed.

Using the **Eraser Tool (E)**, remove these elements to fit the croc's head more naturally. Use a soft brush to remove any jagged or overlapping areas around the frog's eyes and jawline.

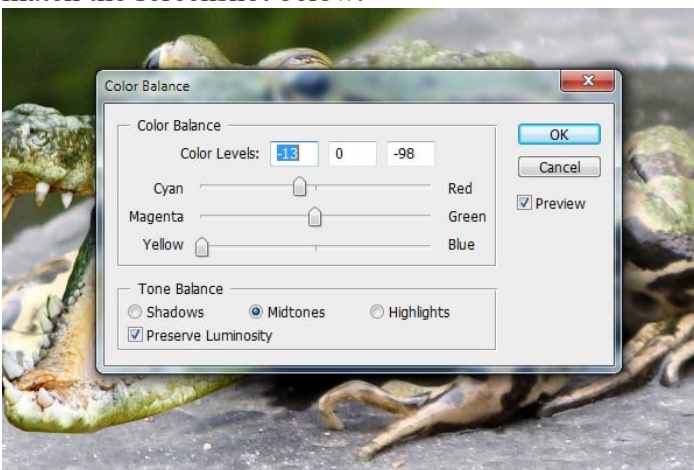


3. How to Color and Shade

Step 1 - The Crocofrog is looking good at the moment, but he needs some color work. First, you will want to outline the croc's head (**Command-click** on the **Croc Head** layer) and you want to select the **Create the new fill/adjustment layer** option in the **Layers** tab.

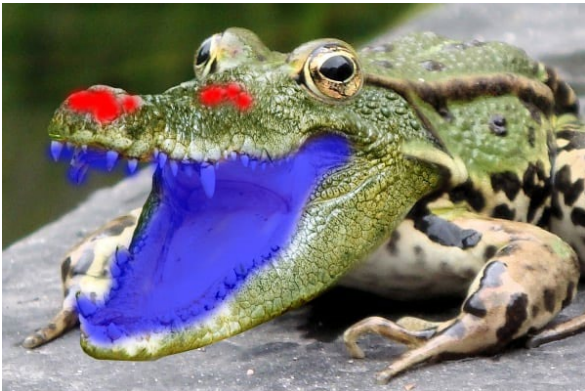


Select the **Color Balance** option, and for **Tone Balance**, choose the **Midtones** option. Then move the sliders to match the screenshot below.



Step 2 - This has created a mask over the entire head, but we don't want the teeth and the inside of the mouth affected. To fix this, simply select the **Eraser Tool** and remove the color from the tongue and teeth.

There are other areas of the croc's head that could do with removing the green color; so once again, select the **Eraser Tool**, but this time reduce the **Opacity** to **50%**. I have highlighted in red the areas that I have erased to 50% and the blue areas I have erased at 100%.



Now we want to lighten a bit of the croc's head color to blend with the frog's body. In the below screenshot, I've highlighted in red the areas I've lightened using the **Dodge Tool**.



Step 3 - It's looking pretty good, but we're still missing some shading. The croc's head seems to be floating above the image, as it has no direct shadow. Select the **Frog** layer and use the **Burn Tool** to darken the ground beneath his head, matching the shadow that the frog is casting.

